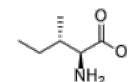


**Product Name** : L-Isoleucine  
**Cat. No.** : PC-22447  
**CAS No.** : 73-32-5  
**Molecular Formula** : C<sub>6</sub>H<sub>13</sub>NO<sub>2</sub>  
**Molecular Weight** : 131.18  
**Target** : Nucleoside Antimetabolite/Analog  
**Solubility** : 10 mM in DMSO



## Biological Activity

L-isoleucine is the L-enantiomer of isoleucine, has a role as a *Saccharomyces cerevisiae* metabolite, an *Escherichia coli* metabolite, a plant metabolite, a human metabolite, an algal metabolite and a mouse metabolite.

## References

**Caution: Product has not been fully validated for medical applications. Lab Use Only!**

E-mail: [tech@probechem.com](mailto:tech@probechem.com)